



humanitarian
innovation fund

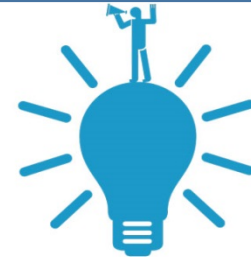
Development & Implementation Phase Grant Facility



Lucy Kingsbury, Programme Officer
Claire Dusonchet, Innovation Adviser
Jess Fisher, Communications Manager

With
Rebecca Petras from Translators without Borders

Have you got a bright
idea that could improve
humanitarian action?



Agenda

- What is innovation and how does the HIF support it?
- What do we mean by Development and Implementation phase?
- What does this look like in reality?
- Is your idea right for funding?
 - How to apply
 - Q&A Session



An Overview of the HIF

The HIF aims to use innovation as a means of achieving demonstrated and cost-effective improvements in humanitarian action

- Grants to support emerging innovations
- Accelerated innovation and targeted R&D resources to address challenges
- Improving the system's ability to innovate



The Innovation Process

RECOGNISE

INVENT

DEVELOP

IMPLEMENT

DIFFUSE



Recognition of a specific problem, challenge, or opportunity to be seized, in relation to the provision of humanitarian aid.

Invention of a creative solution or novel idea, which helps address a problem or seize an opportunity.

Development of an innovation by creating actionable plans and guidance.

Implementation of an innovation to produce real examples of changed practice, testing the innovation to see how it compares to existing solutions.

Diffusion of successful innovations - taking them to scale and leading to wider adoption outside the original setting.



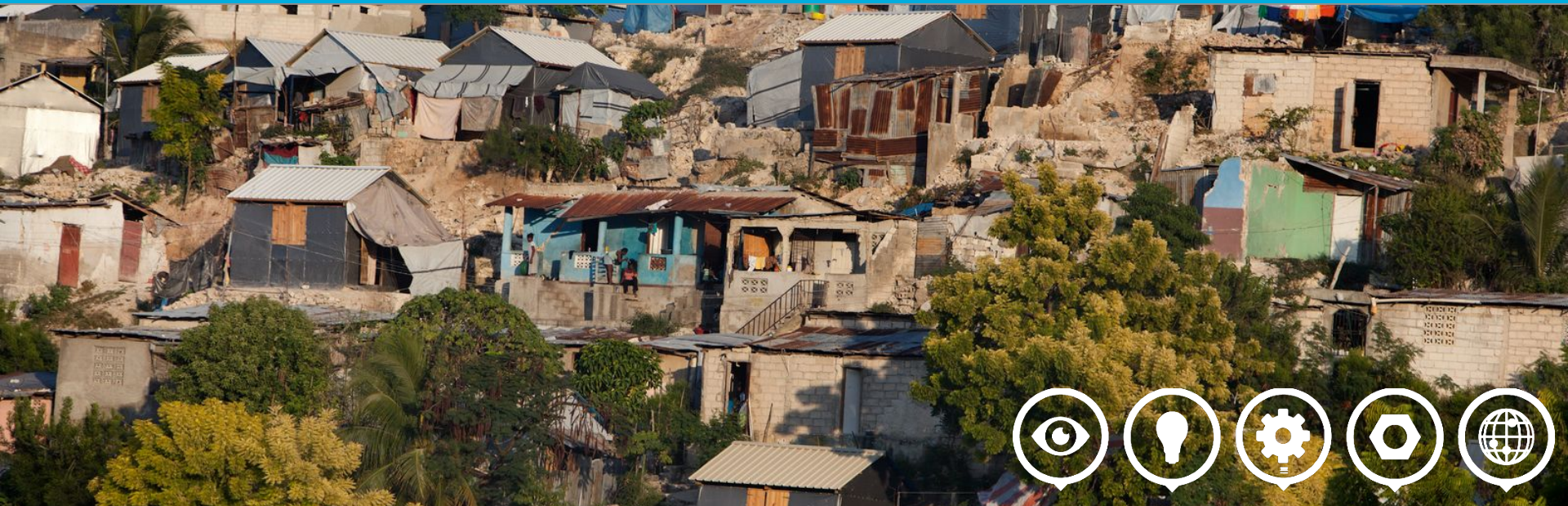
**What do we
mean by
Development
and
Implementation
?**

Development



Development is testing out the idea/prototype, getting feedback from a wide range of people, and improving the innovation so that it's ready to be tested in a humanitarian setting..

- Testing ideas that have demonstrated success at a small scale
- Testing social impact and cost-effectiveness
- Testing methods and business models
- Making operational refinements



Implementation



Implementation – By Implementation we mean rigorous experimental trials and the collection of data to build evidence that the idea really works in practice.

- Testing and validating methods and business models
- Testing and validating social impact and cost-effectiveness
- Making operational refinements
- Building paths to sustainability and scale





What does
this look
like in
reality?

Translators without Borders



Speaker: Rebecca Petras

Translators without Borders' Words of Relief Crisis Response Network is a global translation and localization initiative. Leveraging both human and technological resources, the project builds capacity to facilitate and improve communication among victims, field workers, and relief agencies during and after crises.

Preparedness

Crisis Response

Words of Relief

A TRANSLATIONS CRISIS RELIEF NETWORK
intended to improve communications
with Communities (CwC)
when the crisis-response aid workers
and affected populations
do not speak the same language



**Is your idea
right for HIF
funding?**



Is your project
HUMANITARIAN?

Is your project
INNOVATIVE?

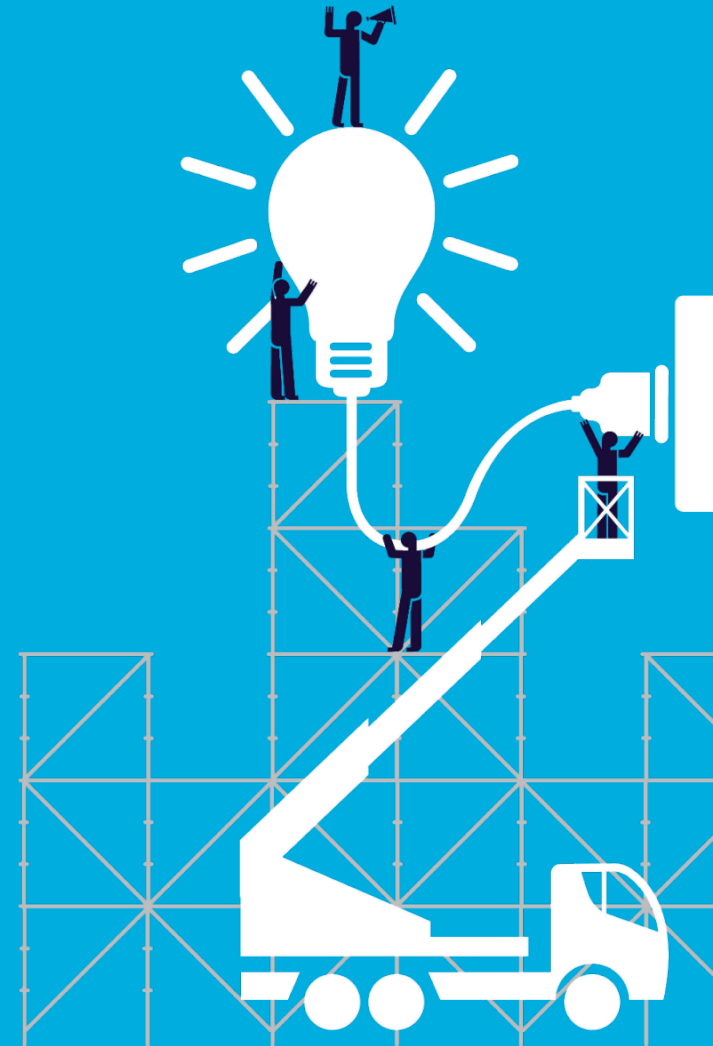


So you're on the right track... but are you eligible?



Only the following are eligible for a HIF grant:

- Non-profit institutions such as a non-governmental organisation
- Public or governmental institutions
- Academic or research institutions
- Private companies (*must be partnered with one of the above*)
- Organisations can apply from any country





What we want to see...

- Impact, Approach, Feasibility, Experience
- Learning and Dissemination
- Future Thinking



Common areas for improvement and advice



- Challenge recognition
- Strong rationale
- Research
- Community engagement
- Methodology
- Sustainability
- Balanced Budget
- Additional funding
- Operational
- Partners! Mixed skill sets





Continued:

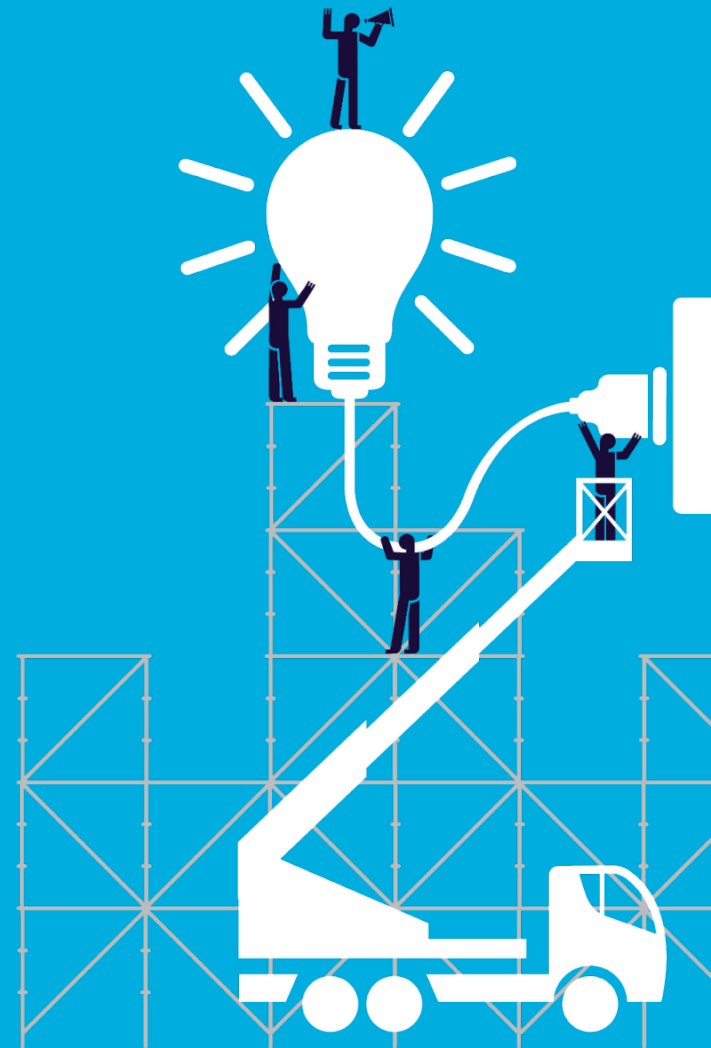
Only two applications can be submitted by one organisation (example)

Make sure all documents are uploaded before submission.

No posted or email submissions

*It's a competition!
IMPACT! RADICAL!*

For more information head here
<http://www.elrha.org/news/key-questions-to-ask-yourself-when-applying-to-the-hif/>





How to Apply

DEVELOPMENT

Grant Value

From: £75,000
Up to: £150,000

RECENT PROJECTS



Apply:
[First Time Applicants](#)
[Previous Applicants \(with login\)](#)

Read the following before you apply:
[Application Process and Guidance](#)
[Key questions to ask yourself before applying](#)
[FAQs](#)
[Monitoring, Evaluation & Learning Note](#)
[10th Call Timeline](#)



Closing date: 15.11.2015

A grant from £75,000 to £150,000 is available for the Development phase of the process. This means the development of an innovation by creating practical, actionable plans and guidelines. Turning ideas into action, the development stage takes designs from the drawing board and transforms them into real-world solutions. To view projects we have funded in this phase click [here](#).

Please apply on our online grant management system: For new applicants click [here](#). For returning applicants click [here](#).

Developing a potential solution is the third phase in the innovation process

By Development we mean testing out the idea/prototype, getting feedback from a wide range of people, and improving the innovation so that it's ready to be tested in a humanitarian setting.

Development and implementation are two stages that are strongly interlinked in the innovation process where fluidity is key to create wider impact. But we see development as a preliminary stage involving initial testing in the field as opposed to implementation which is a more mature phase involving refinements for wider testing and scale readiness.

Types of Development projects we fund

- Testing ideas that have demonstrated success at a small scale
- Testing methods and business models
- Testing social impact and cost-effectiveness
- Making operational refinements
- Examples of Development projects

Examples of Development Projects

RAM-OP is a project by Help Age International. It is a rapid assessment method for measuring the nutritional status and needs, and other related factors that affect older people in humanitarian situations. It includes a questionnaire, a sampling method, and software for data analysis. This project is in the development phase which means it needs to be finalised and tested to produce guidelines that will allow humanitarian workers to



Register here if you are a non-profit organization that would like to apply for grants or in-kind donations or an individual that would like to apply for scholarships that may be offered by the grantmakers using our site. Please read the grantmaker guidelines to determine your eligibility before applying. Grantmakers and their grantmaking interests are listed at the [Grantmaker List](#).

Please note, the Common Grant Application does not make grants, in-kind donations or give scholarships; only the grantmakers using the site do. The Common Grant Application can support multiple users within the same organization's account. If your organization already has an account please contact your account administrator and ask them to issue you an account user name and password. There are no applicant fees to use the site.

[Already have an account? Problems Registering?](#)

Account

* Required Fields

Organization or Individual: * ?

First Name: *

Last Name: *

Organization Name: * ?

Country: *

Email: *

Re-enter Email: *



User Name: * ?

Password: * ?

Re-enter Password: *

Register



 Please remember to save your work if you are going to step away from your computer or work on a single page for any length of time (more than 30 minutes). Our server or your network may time out an inactive session connection for security or other reasons. Your work may be saved by clicking on the Save, Next or Previous buttons. 



[< Previous](#)

[Pause](#)

[Next >](#)



Instructions - Development and Implementation Phase gra...

Introduction:

Welcome to the Humanitarian Innovation Fund's Development and Implementation Phase Facility application system.

Please read through the documents before completing your application.

We suggest that you download the Expression of Interest (EoI) Reference form (which you can find in the 'programme supplemental' section), prepare the answers offline, and then complete the application online once all information has been collected and written (there are word limits set per text box so please keep your answers as short and concise as possible).

Application guidelines:

Please note: you must complete the EoI first. The EoI is designed to focus on and develop your concept. This is an opportunity to explain your idea to the HIF! There are instructional videos and guidelines to support you through the application process. In addition the HIF will support applicants through the process via a Webinar on the 15th of October please see our website for more details and how to register.

Only those applications that meet the HIF's criteria will be invited to submit a Full Application to the facility.

The deadline for submitting an EoI is midnight GMT on the 15th November 2015.

Evaluation guidelines:

EoIs will not be considered if:

The application is incomplete



The supplemental question changes were saved.



< Previous

Pause

Next >



Organization Documents ?

Page Help

Upload Document

Organizat

Page help from: ELRHA - HIF

Please upload your legal registration document. If legal registration documents are not provided your application will not pass the screening phase. If there is a valid reason why you cannot provide your organisation's legal registration document at this time please contact the HIF via info@humanitarianinnovation.org

Please be careful not to upload documents over each other, ensure you select a different area of uploading.

Close

< Previous

Next >

< Previous

Pause

Save

Next >



Program Supplemental - fgdfdg ?

Page Help

Questions

* Required Fields

Start Date: * Proposed start date (DD/MM/YYYY)**Answer:** ***Duration:** * What is the duration? Please enter the number of months your proposed project will run; limit up to 24 months.**Answer:** ***Innovation Stage:** * Please select the innovation stage.

-- Select --

Type of Innovation: * Please select the type of innovation.

- Product - Service Innovation that introduces or improves a product or service – a change in what is offered to end users.
- Process - Innovations that focuses on processes through which products are created or delivered. Examples of process innovations that have had a positive effect on the humanitarian sector are the increasing stockpiling of goods in strategic locations, or the use of pre-made packs and kits.
- Position - Innovation that involves re-positioning the perception of an established product or process in a specific context. Position-based innovations refer to changes in how a specific product or process is perceived symbolically and how they are used
- Paradigm - Innovation that defines or redefines the dominant paradigms of an organisation or entire sector. Paradigm-based innovations relate to the mental models which shape what an organisation or business is about.

Working with other Organisations: * Is your organisation working with other organisations on this project?

-- Select --

Partners: * If working with other organisations on this project, please enter up to five. Enter their name and address. Please enter N/A if you are not working with other organisations.**Answer:** ***Funding :** * Total Funding requested from HIF (& PARTNERS) (Please enter the amount in GBP).**Answer:** *



Ready to apply?!

**Any issues with registering on the online platform
please contact lori@commongrantapplication.com +**

**All guidance can be found on these pages and on the
online platform**

**[http://www.elrha.org/hif/funding/core-grants/
development/](http://www.elrha.org/hif/funding/core-grants/development/)**

**[http://www.elrha.org/hif/funding/core-grants/
implementation/](http://www.elrha.org/hif/funding/core-grants/implementation/)**





Q&A

Next Steps:



If you think you have a suitable project please apply to the Development and Implementation Phase Facility via the online platform here:

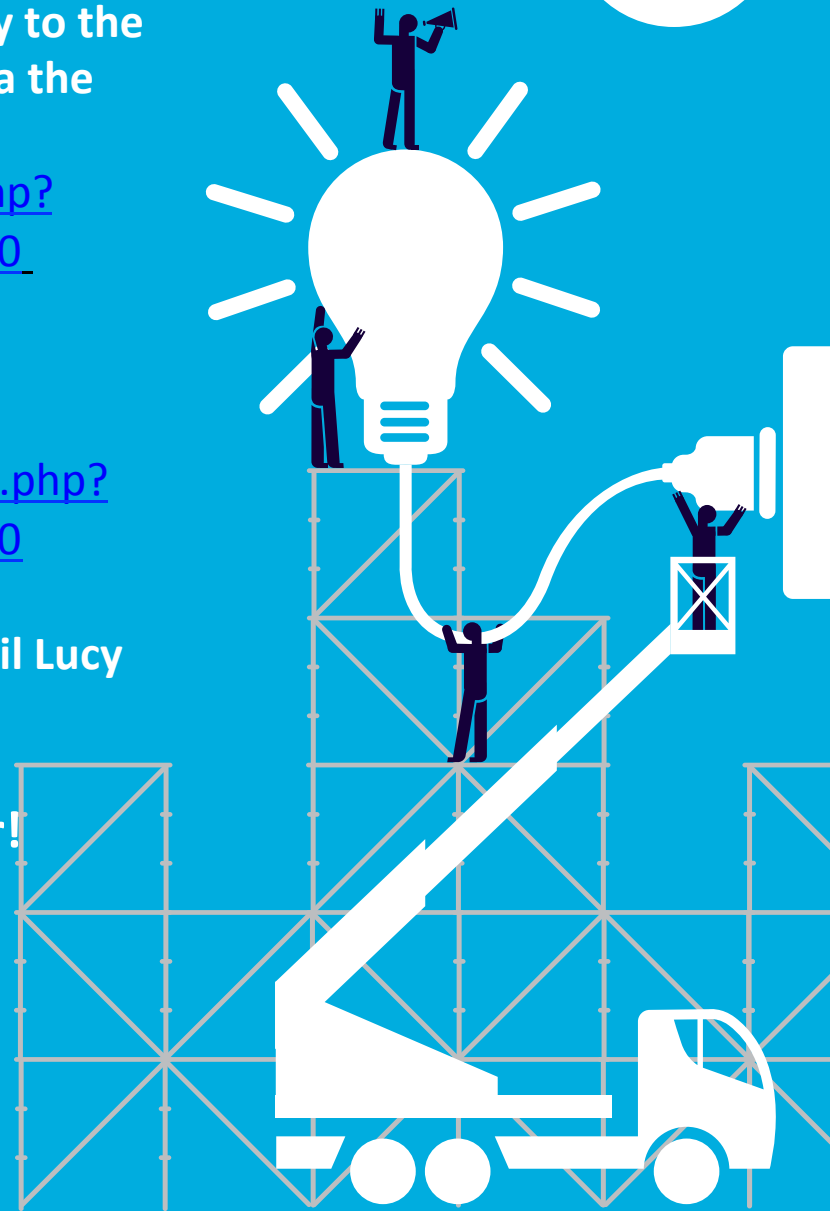
<https://www.commongrantapplication.com/login.php?refOrgId=20971&refProgId=374&refProgType=all%20>

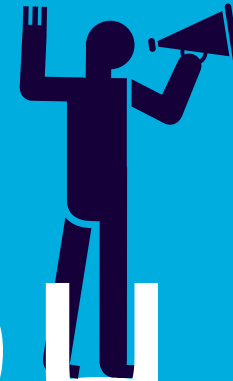
First time on the online platform? register here:

<https://www.commongrantapplication.com/register.php?refOrgId=20971&refProgId=374&refProgType=all%20>

Still have some unanswered questions? Please email Lucy at l.kingsbury@savethechildren.org.uk

Expression of Interest closes 15th of November!





Thank You