



Measuring the impact of Ebola Control Measures

Modelling Ebola in West Africa: London School of Hygiene and Tropical Medicine

Programme Name:
Modelling Ebola in West Africa

Key information

Grant awarded: £258,922

Lead organisation:
London School of Hygiene and Tropical Medicine

Partnering organisation(s):
Médecins Sans Frontières (MSF); Save The Children;
World Health Organization (WHO)

Project length: Nov-14 to Nov-15

Health sector: Modelling

Study location: UK

Principal Investigator(s)

Professor John Edmunds

Purpose

This project intended to fit mathematical and statistical models to the epidemiological and clinical data that are collected and collated by partner agencies. It tracks the changes in the epidemiology; analyses the impact of different countermeasures; and estimates the impact of different approaches to treat patients and control the epidemic.

Expected outcomes

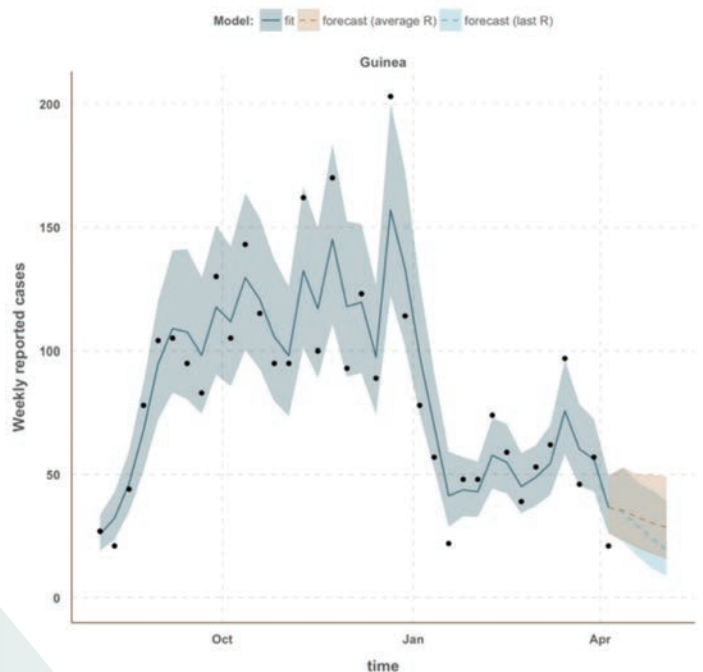
The project will help characterise the transmission dynamics of EVD, project the future course of the epidemic, and estimate the impact of alternative control policies. These models will be adapted to emerging data and to address new public health questions as they arise.

Progress and outcomes achieved (last updated April 2015)

Dissemination is taking place on <http://cmmid.lshtm.ac.uk/research/ebola/> and is updated weekly according to local sitreps from the 3 countries. This has been taking place since November 2014 and shows the number of cases on interactive maps, graphs reproduction rate, and depicts projected outcomes, impact of number of beds etc. This is broken down by region and reports are sent weekly to MSF, SCUK, WHO, and the Cabinet Office for COBRA meetings. The responses to this data and interpretation are very positive and are clearly having an impact for decision makers.

<http://cmmid.lshtm.ac.uk/research/ebola/>

April 2015



Weekly reported and projected cases in Guinea